



**Play value**

Our system of wooden water gutters consists of 10 elements of different shapes and functions which can be combined to individual water play installations. The gutters have different movable shutters, are installed with inclination or horizontal. They allow for interesting water play activities which are particularly attractive for children. The gutters - some of them are as wide as tables - can be used for playing with mud and distributing water. The feet have overlength, therefore it can be cut at different levels on the construction side. By this it is possible to take into account special requirements, e.g. of wheelchair bound children. This system of water gutters can be combined with different water wheels and Archimedes Screws.



Order No. 5.15602 Triangular channel



Order No. 5.10203 Channel with wedge seal  
Photo © Anton Donikov



Order No. 5.15910 Small bucket wheel, 5.10203 Channel with wedge seal and 5.10403 Channel with shutter

**Water play elements made of wood**

**Fundamental characteristics**

- Child proportions according to ergonomic requirements
- Use of natural wood which is appealing to the senses; the beautiful structure of the wood gets more and more visible by use
- Incentive for playing: wood, sand, water
- Movement: motor activities

**Recommended for**

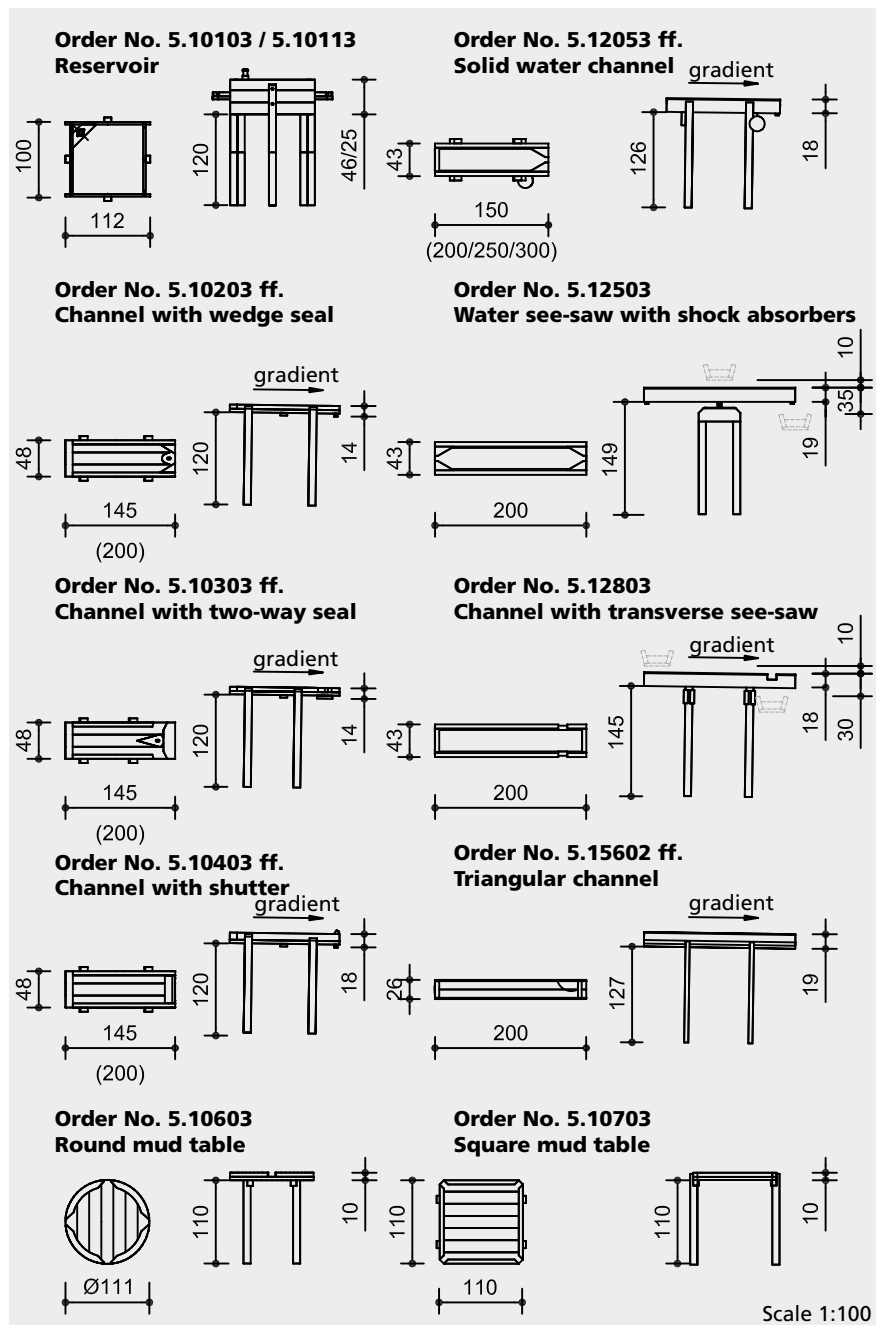
- Kindergarten children
- Supervised play areas, such as kindergartens, schools, after-school programmes or similar
- Public play areas without supervision, such as playground, parks or similar
- Water play areas without supervision

**Barrier-free**

- Independent play



5.10103 - 5.15602



Safety check according to DIN EN 1176

**Components**

- 1 Element each, with the corresponding number of support posts each with steel feet

**Installation information**

Surfacing requirements  
no fall height according to standard, staircase-like constructions may make necessary an examination of the fall height

Recommendation: sand with drainage or paving stone with gully; for playing with „mud“, sand is required.

Required space according to overall installation.  
Foundations according to overall installation, excavation depth 70 cm each

**Attention:**  
**Exact measurements may vary; for all installation dimensions refer to current assembly instructions.**  
Technical changes reserved.



5.10103 - 5.15602

**Technical information**

Equipment made of non-impregnated mountain larch

**Core-free**  
Sawn-timbers core-free, thus decreasing occurrences of cracking and undesired changes in shape



**Tongue and groove**  
Tongue and groove planks made of 4 cm solid wood, highly resilient, no trickling of dust / sand, protection against direct rain



**Ground anchor**  
All parts used for anchoring to the ground are made of hot-dip galvanised steel or stainless steel



**Order No. 5.10103 / 5.10113**

**Plywood**  
Plywood made of mountain larch, three-layer (3 cm) or five-layer (4 cm). High dimensional stability, waterproof, glued according to DIN EN 13353:2011



**For more detailed explanation of the quality characteristics see price list.**

**Order No 5.10103 / 5.12053 ff. / 5.10303 ff. / 5.10403 ff. / 5.15602 ff.**  
Sealed with microcellular rubber

**Order No 5.12053 / 5.12503 / 5.12803**  
Floor plates 10 / 30 cm

**Dimensions** (See sketches)  
(small deviations possible)

Weight 30 - 90 kg

**Planning information**

Equipment marked with a pointing arrow needs to be installed with a gradient of approx. 2% (= 2 cm on 1 m). This means that for planning not only the height of the equipment but also the gradient needs to be taken into consideration.

The lengths of the support posts must be checked for the planned installation heights. The required lengths of the support posts need to be calculated by the customer taking into consideration the installation depth (depending on the surface) and the intended height (above ground).

If several elements are installed in a line, this might make necessary a corresponding modelling of the ground.

**Play value**

Playing with mud, shaping and building with sand, earth and water is a fundamental human requirement, which even adults find difficult to suppress sometimes. With different types of water play equipment, children can gain insights into different functions and learn physical laws while playing. Troughs, water see-saws and mud tables ensure intense mud play which children often participate in together.



Order No. 5.15602 Triangular channel



Order No. 5.10603 Round mud table, Photo © Daniel Perales



Order No. 5.10603 Round mud table



Photo © Phil Wilkinson




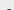
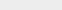
**Water play elements made of wood**



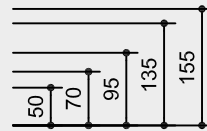
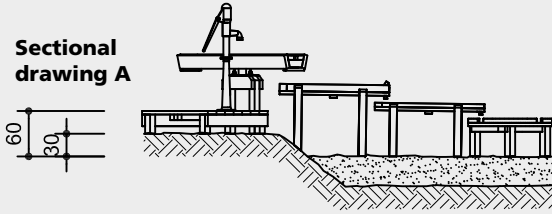
5.10103 - 5.15602

**Water play elements made of wood**

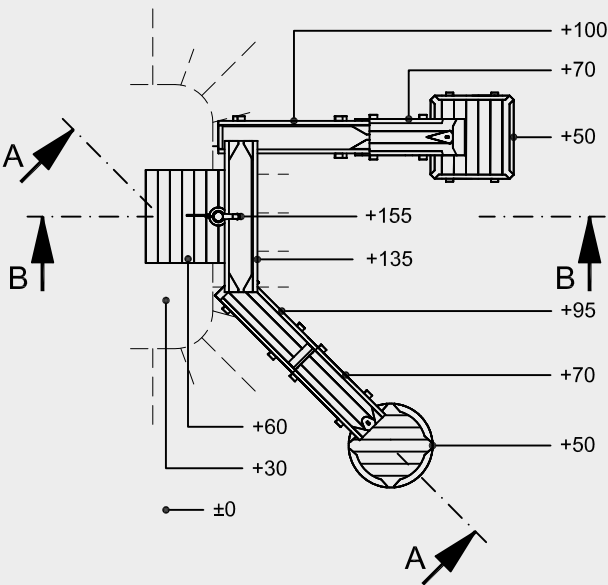
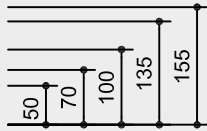
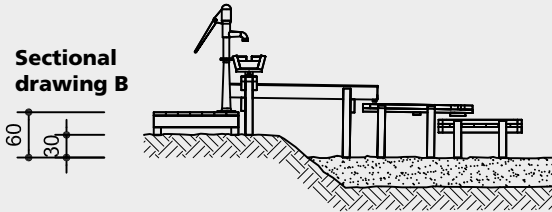
Planning Example

Safety distance   
 Device dimensions   
 Functional distance 

**Sectional drawing A**



**Sectional drawing B**



Scale 1:100

\* The minimum height difference is the required distance between one element to the next. For see-saws the indicated measurements need to be kept to.

**Order No. 5.10103 / 5.10113**

Is usually allocated to pump, with bung for sealing;  
 Height difference 50 cm \* / 30 cm



**Order No. 5.10203**

Can be used as water play table;  
 Height difference 17 cm \*



**Order No. 5.10303**

Can be used as water play table and as distributor channel;  
 Height difference 17 cm \*



**Order No. 5.10403**

Can be used as water play table;  
 Height difference 21 cm \*



**Order No. 5.10603**

Is mostly used as final element of a water way,  
 4 outlets;  
 Height difference 18 cm \*



**Order No. 5.10703**

Is mostly used as final element of a water way,  
 4 outlets;  
 Height difference 18 cm \*



**Order No. 5.12053**

Basic element of this equipment group available up to 3 m length;  
 Height difference 25 to 28 cm \*



**Order No. 5.12503**

Two-way distributor with sturdy, buffered mechanism;  
 Height difference 65 cm\* to bottom, 15 cm \* to top (see side view)



**Order No. 5.12803**

Transverse distributor on rubber buffers;  
 Height difference 30 cm\* to bottom, 10 cm \* to top (see side view)



**Order No. 5.15602**

Standard length 2.00 m, but can also be delivered shorter;  
 Height difference 24 cm \*



5.10103 - 5.15602